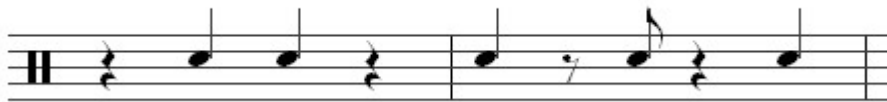


SON CLAVE.

The **3, 2 son clave** is the following rhythm. You will see it has 3 notes in the first bar, and 2 in the second. That's where it gets the 3,2 name from..



The **2, 3 son clave** is the same as the 3,2 except the bars are swapped around. Now the first bar has 2 notes, the second has 3, hence the name: 2,3 son clave.



RUMBA CLAVE.

The only difference between the rumba claves and the son claves is that the 3rd note of the "3 bar" is delayed an 8th note.

So the 3,2 rumba clave is..



And the 2,3 rumba clave is..

