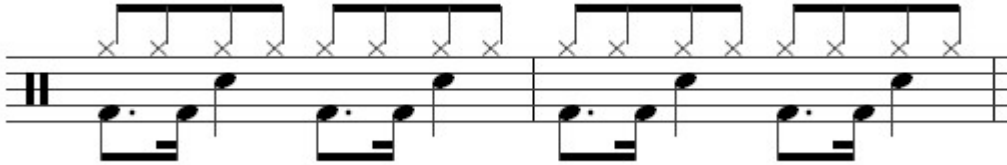


**EXERCISE 1.**

In this beat you are playing a 16th note figure on the bass drum. The snare drum and hihats remain constant throughout, the only thing that changes is the bass drum. Here's exercise 1..



**EXERCISE 2.**

The next exercise uses 16th notes and 8th notes on the bass drum. The hihats and snare drum are still constant..

